

revalu*

Shaping the buildings of tomorrow.

AMORIM

Ernst von Stegmann ernst@revalu.io
Co-founder and COO / CFO +4916096669258

www.revalu.io
[LinkedIn](#)

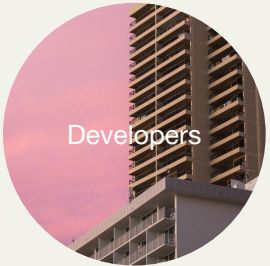
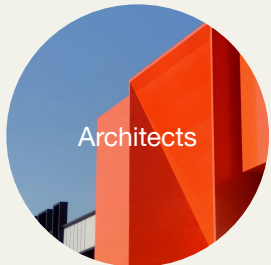


The built environment generates 40% of annual global CO2 emissions.

Building materials account for about 70% of a building's carbon footprint.

This calls for radical change in the way we build.

With regulations on the rise, stakeholders need to evaluate their buildings footprint



Material data = key to climate targets

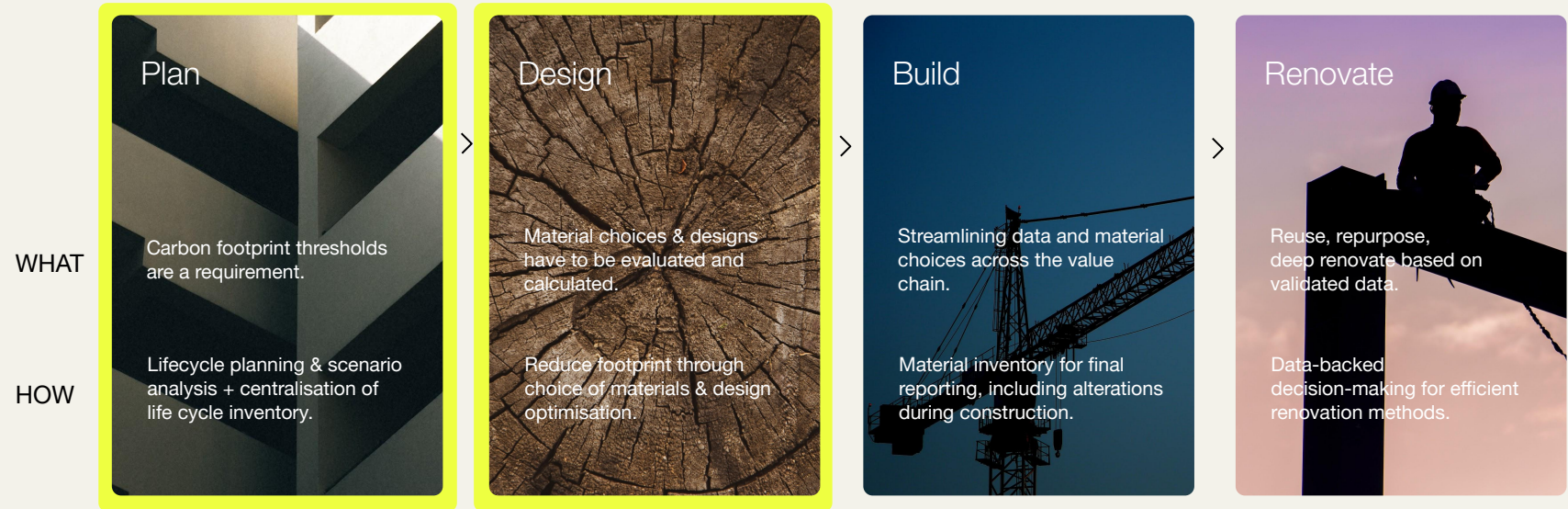


Need to set, assess and report on climate targets

Need to align products with requirements

Revalu is an EU SaaS platform enabling stakeholders across the industry to — set, assess and reach climate targets.

Accessible material data for easy product comparison and emission calculations based on project requirements — starting from the planning stage across the entire process.



How it works for Decision-makers: Assessing and optimising their impact through early material assessment and selection

Material	Upfront Carbon	Water	Energy Mix	Cost	Renewable
EcoCocoon	2.8 kgCO ₂ e/m ²	1.24 m ³ m ³	15%	Cost	15% Renewable
Lightweight Expanded Clay Aggregate	422.72 kgCO ₂ e/m ³	44.50 m ³ m ³	0.43 m ³ m ³	Cost	4.86% Renewable
Armaflex	292.00 kgCO ₂ e/m ²	2.21 m ³ m ²	26.21%	Cost	26.21% Renewable
Cross-Laminated Timber - CLT	-622.72 kgCO ₂ e/m ³	0.00 m ³ m ³	75.91%	Cost	75.91% Renewable

Search for materials at any stage of process

Material	Upfront Carbon	Water	Energy Mix	Cost	Renewable
Cross-Laminated Timber - CLT	-622.72 kgCO ₂ e/m ³	0.00 m ³ m ³	75.91%	Cost	75.91% Renewable
binderholz CLT	-607.48 kgCO ₂ e/m ³	0.21 m ³ m ³	86.80%	Cost	86.80% Renewable
Schiliger Holz AG	-64.15 kgCO ₂ e/m ³	1.28 m ³ m ³	87.76%	Cost	87.76% Renewable
Other CLT	2.8 kgCO ₂ e/m ²	1.24 m ³ m ²	15%	Cost	15% Renewable

Compare based on impact and requirements

External Facade 1
Size Unknown

Floor slab
127 m²

Ground slab
127 m²

Assign materials to building elements & project

BR23 (Denmark) Ⓞ

12,00 kgCO₂e/m²/yr
2023 Threshold Limit

Upfront Carbon Impact Ⓞ

615 kgCO₂e/m²

14/78 Materials Calculated Ⓞ

Energy mix Ⓞ

80% Renewable

14/78 Materials Calculated Ⓞ

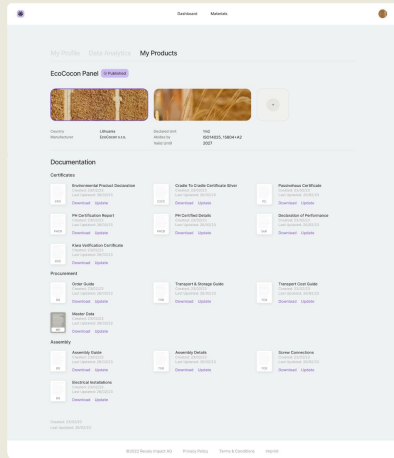
12,30 kgCO₂e/m²/yr
A1-A3

14/78 Materials Calculated Ⓞ

Assess and export your buildings footprint

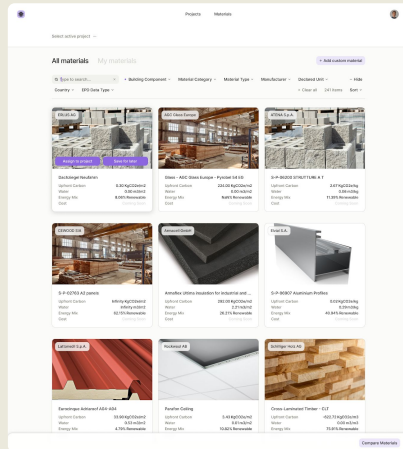
How it works for Manufacturers:

The products are visible, comparable and taken into account early on in the planning stage



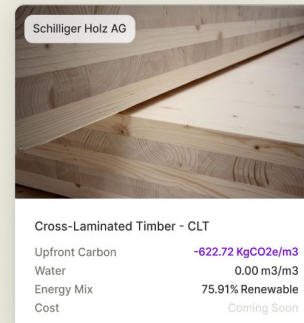
Product Catalogue

Present your product portfolio and add labels to make yourself visible to project owners



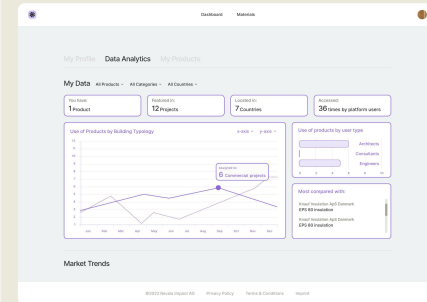
Material Library

The smart search and filter features, allows users to find, compare and assign your products



Promote Benefits

Our data mapping and recommendation engine increases visibility of your products



Product Data Analytics (Coming soon)

Get exclusive insights on your products, market reach and trends.

What the market says...



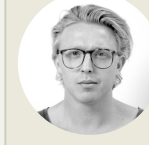
Rudi
Precht
Austria

"We need revalu to compare and filter materials based on different scenarios and impact to convince our clients to take better decisions, it has to be backed-up by data."



Albert
ATP
Austria

"As an architect i want to upload my BIM model to revalu to identify the different impact values and then preselect the different specific materials based on the compared values and set targets."



Kasper
EFFEKT
Denmark

"Right now sourcing materials is like Pokemon go, you scout the whole internet for materials and choices. The people that have the biggest tool box of materials out there have the best chance at reducing emissions. I wish someone could build this."



Ann-Britt
3XN/GXN
Denmark

"Finding generic data and EPDs, takes time, there are limitations in terms of pulling out data items. It would be great to search all options that are based on the same/different specifications or requirements."



Katrine
Henning Larsen
Denmark

"To do a very simple carbon footprint estimation early on is crucial, ...All the EPD are in pdfs, its totally useless and old fashioned, that data is crucial to be used for such a tool. Everyone wants good EPD / material information data, we need revalu."



Tore
BIG
Denmark

"Architects need to have a measuring tool and to make design iterations as early as possible in the concept phase. This tool needs to contain all product data on all materials. It does not exist currently but everyone needs it, so revalu has a huge potential."

Early-bird offer: what is in it for you?

At revalu, we strive to develop the product based on your needs.

You will be featured in our platform and marketing materials, as well as have the opportunity to contribute to the shaping of the platform.

We believe that you are a vital part of solving the complex climate challenge in this industry, and our mission is to enable diverse solutions to be seen, promoted and help them scale.

Together with you and our top selected innovative materials, we want to build a community of builders of tomorrow.

Special Member Package

1 product: 25 Euro per month per product
2-5 products: 20 Euro per month per product
6-50 products: 15 Euro per month per product

- + Profile set-up
- + Building blocks + reference projects
- + Showcase product benefits
- + Featured in “discovery space” for innovative materials
- + Featured in monthly newsletter
- + Presented in our booth at conferences
- + Referred to architects across EU

You are in the top selected innovative materials

Setting up in 2 simple steps:

01 **You** send us any information you have available

Profile info

Product images (high resolution) ✓

Banner image (1120 x 162) ✓

Company logo (png /jpeg) ✓

Company description (500 max) ✓

Contact information ✓

Location: suppliers / distributors ✓

Product info

Fire, thermal, acoustic performance ✓

Product references/ building systems ✓

Safety data sheet ✓

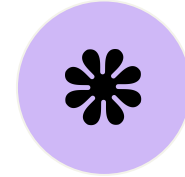
Product dimensions (*weight*) ✓

EPD third party verified ✓

Any additional docs/ images ✓

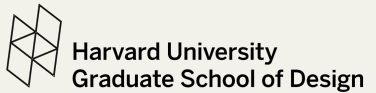


02 **We** make it ready



We set up your profile.
Ready to go!

Some of our pilot users and supporters





Building a better future, together.