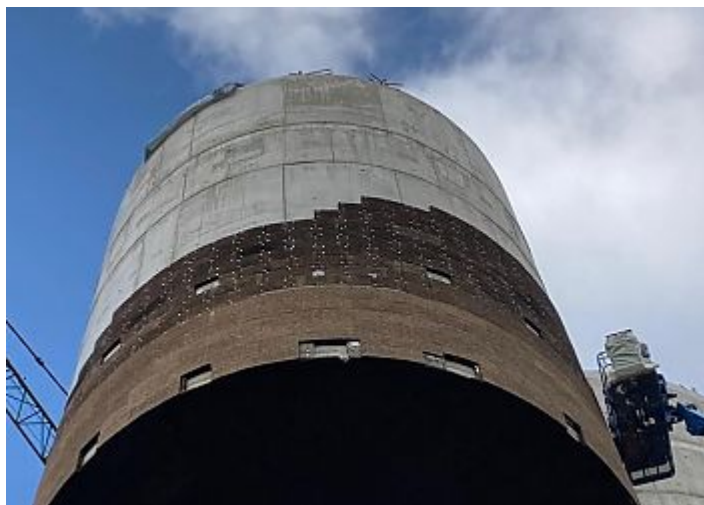
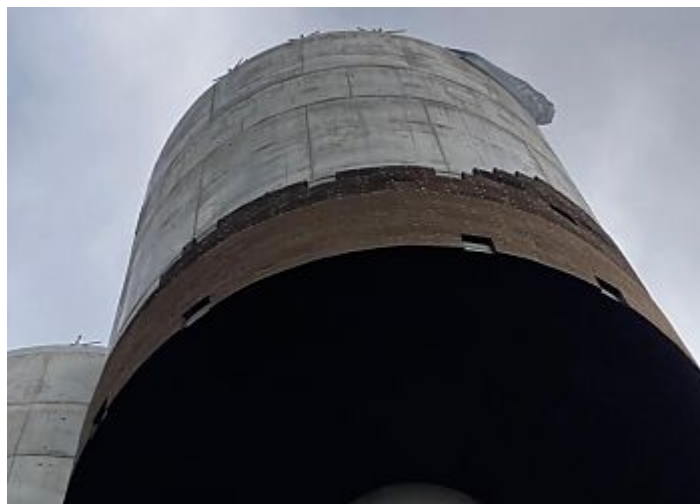
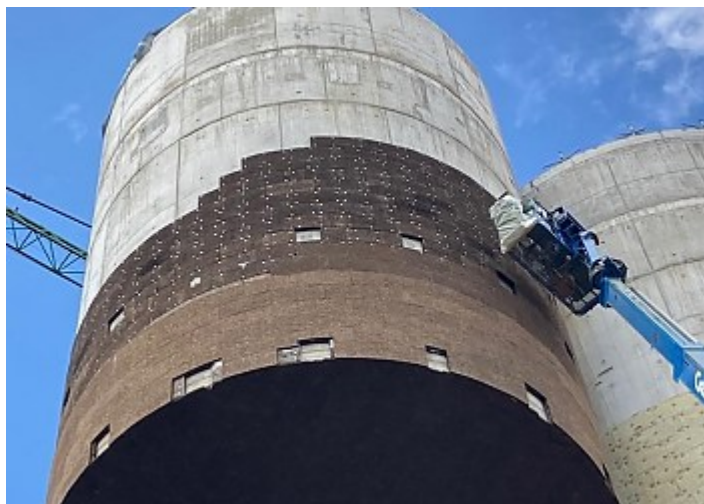


CHATEAU D'EAU

Amann-Cánovas-Maruri (Madrid)

Kirchberg, Luxembourg

2023

**ICB Standard + MDFaçade**

Exterior cladding of elevated water tanks at CHATEAU D'EAU KIRCHBERG, where cork was chosen not only by its insulating capacity, but also for the fact that the project is located in a forest area, assuming cork an important integration role to those concrete water tanks.

UNIDADE DE DISTRIBUIÇÃO:

Rua Comendador Américo Ferreira Amorim, 105
4535-186 MOZELOS VFR - PORTUGAL
Telef: +351 22 741 9100
Fax: +351 22 741 9101
Email: info.aci@amorim.com
www.amorimcorkinsulation.com

UNIDADE INDUSTRIAL DE SILVES:

Vale de Lama - Apartado 27
8300-999 SILVES - PORTUGAL
Telef: +351 282 440 720
Fax: +351 282 440 721

UNIDADE INDUSTRIAL DE VENDAS NOVAS

SEDE:
Estrada de Lavre, Km 6 - Apartado 7
7084-909 VENDAS NOVAS - PORTUGAL
Telef: +351 265 809 220
Fax: +351 265 809 221

Capital Social: EUR 2.100.000,00
Registo na C.R.C.P. de Vendas Novas
NIF Nº PT 502 863 145



UNIDADE DE DISTRIBUIÇÃO:

Rua Comendador Américo Ferreira Amorim, 105
4535-186 MOZELOS VFR - PORTUGAL
Telef: +351 22 741 9100
Fax: +351 22 741 9101
Email: info.aci@amorim.com
www.amorimcorkinsulation.com

UNIDADE INDUSTRIAL DE SILVES:

Vale de Lama - Apartado 27
8300-999 SILVES - PORTUGAL
Telef: +351 282 440 720
Fax: +351 282 440 721

UNIDADE INDUSTRIAL DE VENDAS NOVAS

SEDE:
Estrada de Lavre, Km 6 - Apartado 7
7084-909 VENDAS NOVAS - PORTUGAL
Telef: +351 265 809 220
Fax: +351 265 809 221

Capital Social: EUR 2.100.000,00
Registo na C.R.C.P. de Vendas Novas
NIF Nº PT 502 863 145

